

under the kaitiakitanga of Ngāti Whātua Ōrākei

Valley catchment recognized as a world-class urban sanctuary of local, regional and national significance

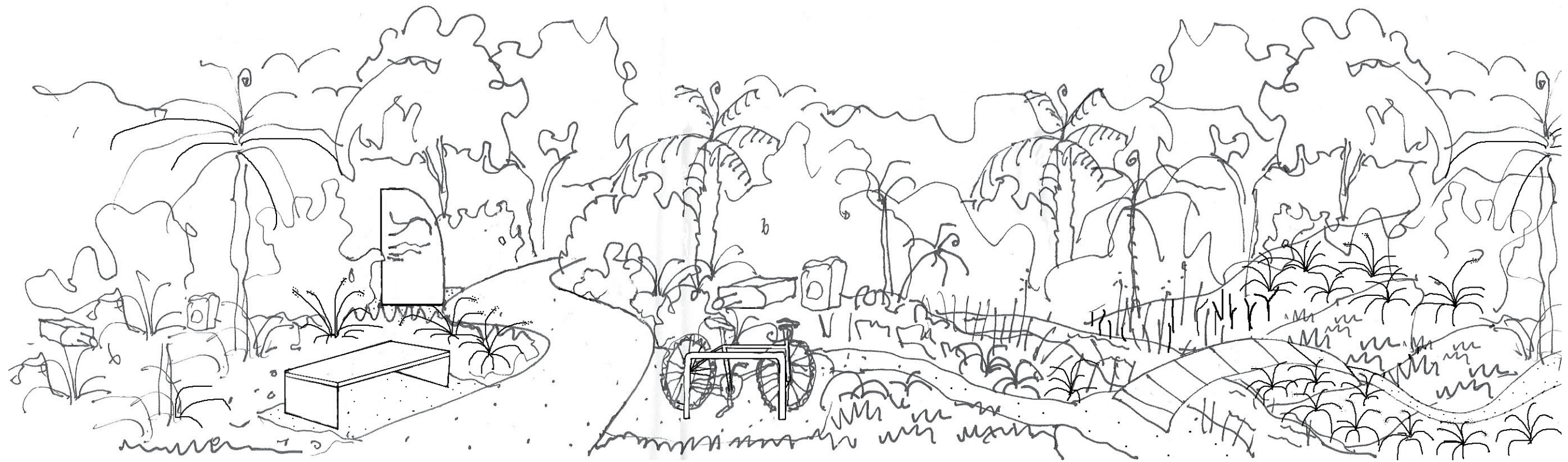
that is/ has

- Clean water (stormwater, drains, streams, intertidal, estuarine, sea);
- Restored/thriving bush, intertidal, and estuarine areas;
- Mammal pest free, abundant native plants & trees, and native fauna (birds, bugs, fish)

where

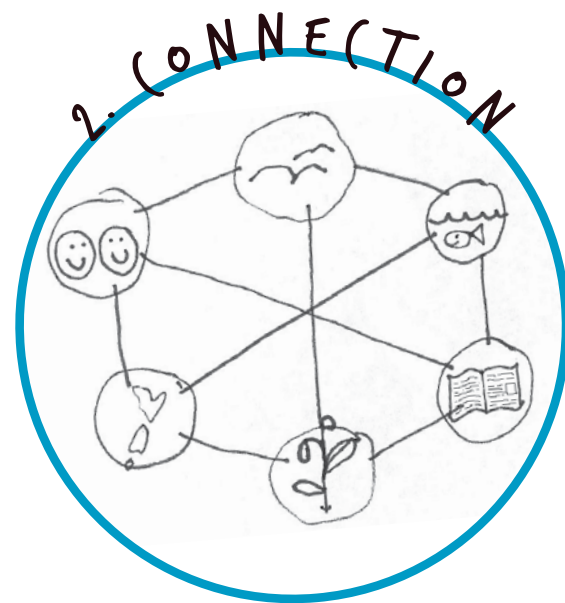
Current and future generations can access a pathway network with different options by foot or cycle or watercraft in order to connect to the valley's historical & cultural significance and bicultural heritage, and to enjoy, manage and protect its natural features.

under the stewardship of volunteer restoration groups with support from the Ōrākei Local Board and Auckland Council





Engage major landowners and the volunteer community to drive ecological improvements throughout the whole valley. Encourage/identify & equip leaders to drive this change.



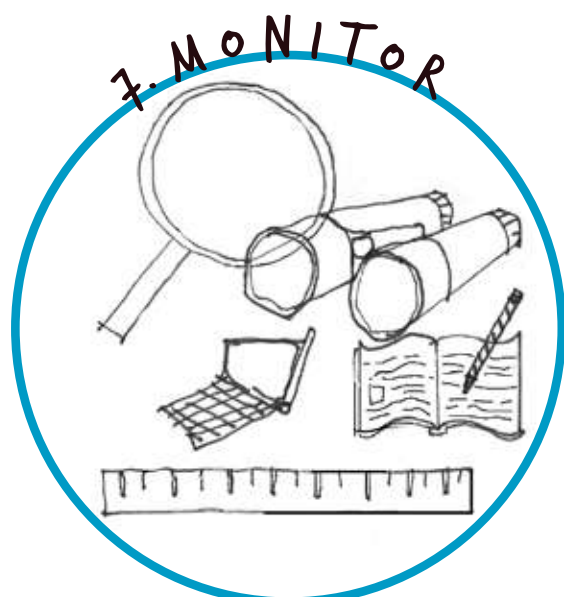
Connect people to the valley (recreation, tourism, guardianship, conservation advocacy, education). Connect ecological improvements to contribute to region-wide biodiversity (wildlife movements, biodiversity corridors).



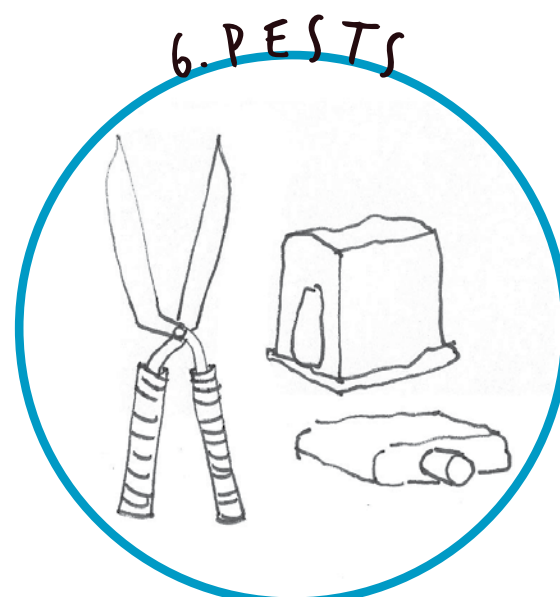
Share a common set of information (data, plans, events, learnings) upon which to base decisions. Create an information hub, with a delegated gatekeeper for this information.



Monitor, advocate for and improve water quality in the Pourewa Valley (stormwater, drains, streams, intertidal, estuarine, sea).



Monitor baseline water quality, habitat quality and species diversity indicators against which improvements can be measured aligning with the monitoring taking place in Ōrākei Basin.



Control pest plants and eliminate pest animals within the catchment.



Enhance habitats to improve the population numbers and diversity of birds, bugs and fish.

ACTION PLAN

The following action plan aims to provide a pathway to implement the vision and aims for the Pourewa Valley as agreed by the community-led advocacy group.

There are a set of actions for each of the seven aims, each with its own number identifier (e.g. 1.1, 1.2 etc). Each number identifier has been referenced to suggestions or areas for improvement that were raised at the stakeholder interviews and/or the community meeting, outlined in Part 1 of the Plan. Refer to the left hand column of the 'action tables' which follow.

The next column provides a list of potential "resources" for each action. These mainly relate to funding opportunities available to implement the action. A web link for each funding source is also provided in the references section to this plan.

The next 2 columns provide a indication of which groups will contribute to implementing the action. At present any internal actions that can be progressed by the Pourewa Valley Integrated Plan Community-led Advocacy Group (PVAG) are outlined. Until the governance structure of this group is determined (action 1.2), other internal actions are TBC. External groups include Local and Central Government Agencies (and their departments) that need to be included in implementing a desired action.

The final column identifies actions that can be implemented within a year of the Plan's adoption. These are "quick wins" to progress the Plan's vision. For example, Action 1.4 involves seeking funding and constructing bait stations for distribution to restoration groups and landowners. These type of actions are intended to be progressed from July 2020 as part of the Ōrākei Local Board's grants round. Other actions are defined as being "ongoing" to reflect that fact they will be implemented over a longer timeframe. These actions are likely to be refined according to the timeframe for implementation after the first year. For example, advocacy relating to water quality (Action 4.1) will be an ongoing process that will partly be given effect in Healthy Waters projects identified for the Pourewa Valley.

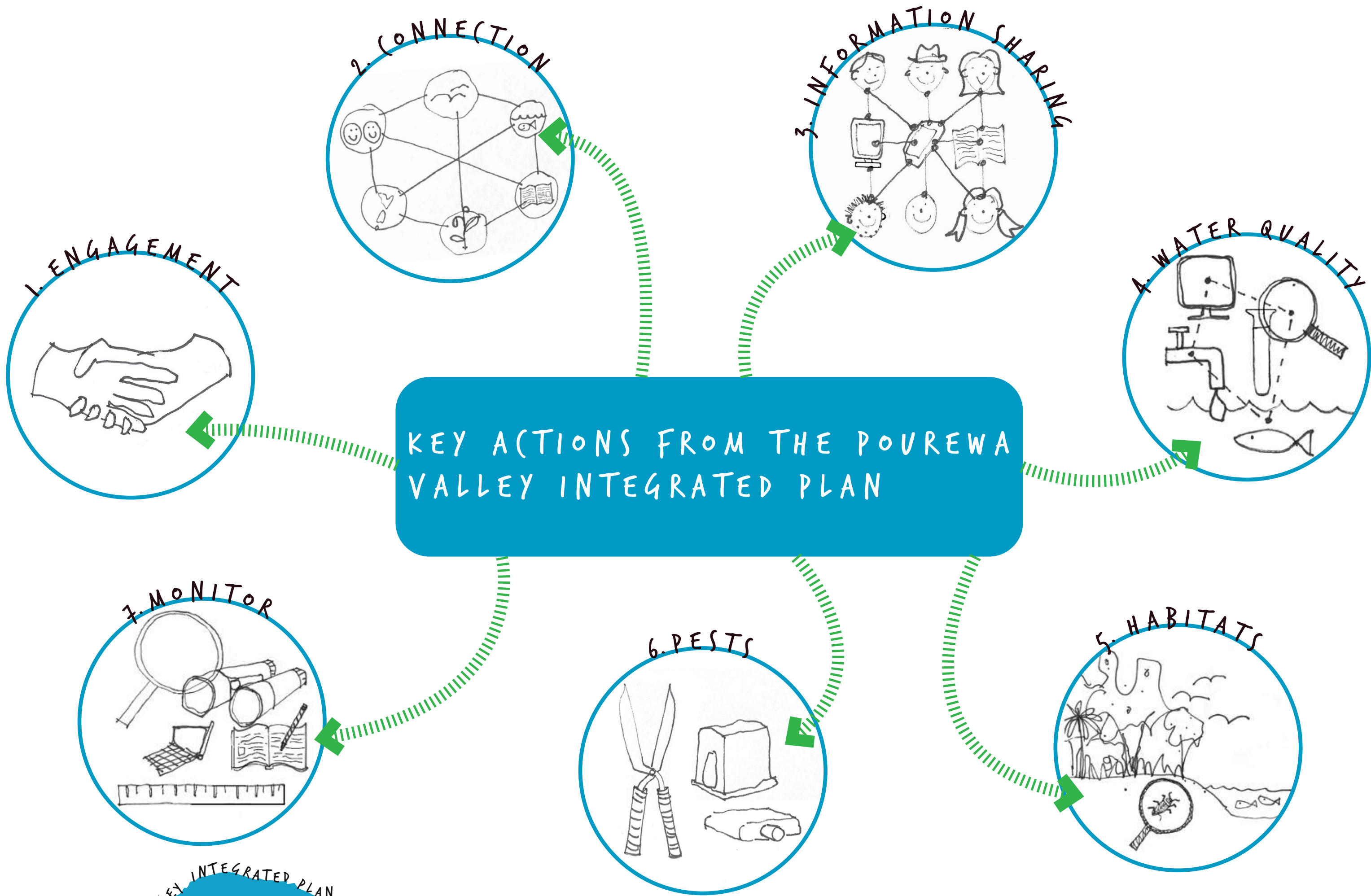


FIGURE 10: ACTIONS ARISING FROM THE PLAN

I. ENGAGEMENT

Engage major landowners and the volunteer community to drive ecological improvements throughout the whole valley. Encourage/identify and equip leaders to drive this change.



WHAT ?

ACTIONS

- Define the role, seek funding and appoint a Pourewa Restoration Group Manager/Coordinator (1.1)
- Develop a governance structure for the Pourewa Integrated Plan Community-led Advocacy Group and develop information sharing protocols and communication processes across the group (1.2)
- Seek clarity from agencies around funding for North-South connections to the Auckland Transport shared path through Pourewa Valley, including: (i) railway crossing next to Tahapa and Tahapa East Reserves (ii) railway crossing in the Gowing Drive area (iii) link at bottom of John Rhymer Place (1.3)
- Seek funding and construct bait stations and traps for distribution to groups and residents (1.4)
- Provide advice and guidelines and/or submissions into the planning and design process for major land-use developments within the catchment (e.g. resource consent applications, Unitary Plan changes) (1.5)
- Engage schools to undertake pest management and restoration activities (Selwyn College; Meadowbank School; St Thomas School) including courses on trapping, monitoring (e.g. tracker tunnels), seed collection and propagation (1.6)
- Engage the Ōrākei Youth Board to undertake and/or support pest management and restoration activities including courses on trapping, monitoring (e.g. tracker tunnels), seed collection and propagation (1.7)
- Seek clarity from Agencies on their level of commitment in supporting habitat enhancement and pest control/elimination on their land(1.8)
- Engage private landowners to trap on reserve boundaries. (1.9)
- Continue to engage with Selwyn College to determine their long term plans for MOE land (Selwyn Bush and Reserve) (1.10)
- Facilitate volunteer recruitment and retention for existing volunteer groups across the Pourewa Valley (1.11)

RESOURCES

- AC Community Coordination and Facilitation (CCF) grant;
- AC Community Coordination and Facilitation (CCF) grant; Ōrākei Local Board Grant
- DOC Community Fund ; AC Local Parks; AC NETR fund; Ōrākei Local Board Grant; Ōrākei Local Board Quick Response & Tree Protection Grant
- DOC Community Fund; AC Local Parks “adopt a park” programme; AC NETR fund (Supply of tools and resources for conservation projects); Countdown Growing for Good Grant
- DOC Community Fund; AC Local Parks “adopt a park” programme; AC NETR fund (Supply of tools and resources for conservation projects); Ōrākei Local Board Grant; Ōrākei Local Board Quick Response & Tree Protection Grant
- DOC Community Fund; AC NETR fund (Supply of tools and resources for conservation projects); Ōrākei Local Board Grant; Ōrākei Local Board Quick Response & Tree Protection Grant
- DOC Community Fund ; AC NETR fund; Ōrākei Local Board Grant; Ōrākei Local Board Quick Response & Tree Protection Grant; AC Community Coordination and Facilitation (CCF) Grant.

WHO ?

INTERNAL

- Pourewa Valley Integrated Plan Community-led Advocacy Group (PVAG)
- Pourewa Valley Integrated Plan Community-led Advocacy Group (PVAG)
- Pourewa Valley Integrated Plan Community-led Advocacy Group (PVAG)
- Pourewa Valley Integrated Plan Community-led Advocacy Group (PVAG)
- Pourewa Valley Integrated Plan Community-led Advocacy Group (PVAG)
- Pourewa Valley Integrated Plan Community-led Advocacy Group (PVAG)
- Pourewa Valley Integrated Plan Community-led Advocacy Group (PVAG)
- Pourewa Valley Integrated Plan Community-led Advocacy Group (PVAG)
- Pourewa Valley Integrated Plan Community-led Advocacy Group (PVAG)

EXTERNAL

- Ōrākei Local Board Advisors
- Ōrākei Local Board Advisors
- New Zealand Transport Agency; Auckland Transport; Auckland Council; Ōrākei Local Board; Watercare Services Ltd, Auckland Motorway Alliance; KiwiRail; Ministry of Education; Ministry of Housing and Urban Development/Urban Development Authority
- Forest & Bird Protection Society; Downtown Auckland Rotary Club Mens Shed
- AC Biodiversity; AC Biosecurity; AC Stormwater; AC Healthy Waters; Ministry of Housing and Urban Development/Urban Development Authority.
- AC Sustainable Schools - Environmental Services Unit; AC Local Parks (Community Ranger); DOC
- AC Sustainable Schools - Environmental Services Unit; AC Local Parks (Community Ranger); DOC; Ōrākei Local Board Grants Advisors
- AC Biodiversity; AC Biosecurity; AC Stormwater; AC Healthy Waters; AC Local Parks; AC Sustainable Schools
- AC Local Parks; AC Biosecurity
- Ōrākei Local Board, Selwyn College, Ministry of Education
- Forest & Bird Protection Society

WHEN?

- YEAR 1
- YEAR 1
- YEAR 1
- YEAR 1
- ONGOING
- ONGOING
- ONGOING
- ONGOING
- ONGOING
- ONGOING

WHAT ?

WHO ?

WHEN?

2. CONNECTION

Connect people to the valley (recreation, tourism, guardianship, conservation advocacy, education). Connect ecological improvements to contribute to region-wide biodiversity (wildlife movements, biodiversity corridors).

ACTIONS

Advocate for the inclusion of references to the Pourewa Integrated Plan in the Ōrākei Local Board (3 Year) Plan 2020, including: proposed actions; funding priorities; governance structure of community-led advocacy group (2.1)

Develop a communications plan for ongoing advocacy of the Pourewa Integrated (Final) Plan, including: (i) target audience/s (ii) core channels (e.g. Orakei Forum, R&R meetings, Ōrākei Community Association website) (iii) key messages (iv) action plan (e.g. events calendar, campaigns) (v) evaluation (2.2)

Develop a path network hierarchy (main path, secondary paths) including a main spine walking trail to the north of Pourewa Creek. Complete a way-finding exercise plotting paths & junctions and determine signage requirements and ongoing track maintenance commitments (2.3)

Investigate new/future path connections via a boardwalk or bridge across Pourewa Creek from Kepa Bush to the proposed Auckland Transport Shared Path (2.4)

Investigate new/future path connections to the Auckland Transport shared path through Pourewa Valley, including: (i) railway crossing in the Gowing Drive area connecting to St Johns Road to the east (ii) link at bottom of 64 John Rhymer Place with cycle access to Selwyn and St Thomas Schools (2.5)

Promote, support and participate in Auckland wide pest free and biodiversity events and programmes (2.6)

Work with iwi, businesses (including tourism operators), Local Board and Local & Central government to promote the Pourewa Valley as a world-class urban sanctuary of local, regional and national significance (2.7)

RESOURCES

Ōrākei Local Board Grant; Ōrākei Local Board Quick Response & Tree Protection Grant

DOC Community Fund; Ōrākei Local Board Grant

DOC Community Fund; Ōrākei Local Board Grant

DOC Community Fund; Ōrākei Local Board Grant

DOC Community Fund; AC NETR fund (Supply of tools and resources for conservation projects); Ōrākei Local Board Grant; Ōrākei Local Board Quick Response & Tree Protection Grant; AC Community Coordination and Facilitation (CCF) grant

INTERNAL

Pourewa Valley Integrated Plan Community-led Advocacy Group (PVAG)

Pourewa Valley Integrated Plan Community-led Advocacy Group (PVAG)

Pourewa Valley Integrated Plan Community-led Advocacy Group (PVAG)

Pourewa Valley Integrated Plan Community-led Advocacy Group (PVAG)

Pourewa Valley Integrated Plan Community-led Advocacy Group (PVAG)

Pourewa Valley Integrated Plan Community-led Advocacy Group (PVAG)

Pourewa Valley Integrated Plan Community-led Advocacy Group (PVAG)

EXTERNAL

Orakei Local Board Advisors

Whai Maia Ltd; Ngāti Whātua Ōrākei; Eastern Bays Songbird Project; Friends of Pourewa Valley; Friends of Kepa Bush; Pourewa Restoration Group; Meadowbank-St Johns Residents Association; Ōrākei Community Association; Mission Bay-Kohimarama Residents' Association; Purewa Cemetery and Crematorium; Meadowbank Pony Club; Eastridge Shopping Centre; Scouts - part of Ōrākei Basin Advisory Group; Youth Town - part of Ōrākei Basin Advisory Group; Auckland Water Ski Club - part of Ōrākei Basin Advisory Group; NZ Yachting Club - part of Ōrākei Basin Advisory Group; Outboard Boating Club From the Deck; Royal Forest and Bird Protection Society of New Zealand Inc; KiwiRail; New Zealand Transport Agency (NZTA); Auckland Transport; Ministry of Education; Ministry of Housing and Urban Development/Urban Development Authority; Selwyn College; St Thomas's School; St Josephs Ōrākei; Meadowbank School; Hapua Thrive

Auckland Council Parks & Places Specialist; Whai Maia Ltd, Ngāti Whātua Ōrākei; Ministry of Education; NZTA; Auckland Transport; Kiwirail; AC Local Parks

Auckland Council Parks & Places Specialist; Whai Maia Ltd, Ngāti Whātua Ōrākei; Ministry of Education; NZTA; Auckland Transport; Kiwirail; AC Local Parks

Auckland Council Parks & Places Specialist; Whai Maia Ltd, Ngāti Whātua Ōrākei; Ministry of Education; NZTA; Auckland Transport; Kiwirail; AC Local Parks

YEAR 1

ONGOING

ONGOING

ONGOING

ONGOING

ONGOING

ONGOING



3. INFORMATION - SHARING

Share a common set of information (data, plans, events, learnings) upon which to base decisions.
Create an information hub, with a delegated gatekeeper for this information



WHAT ?

ACTIONS

Assemble an electronic database of information (reports, documents, plans, data) for use in Plan development and implementation (3.1)

Investigate the Tamaki Estuary Environmental Forum (TEEF) as a model/framework for both information sharing and governance (3.2).

Approach Ngāti Whātua Ōrākei about the use of He Tomo Kanga Hub on Kapa Road as an Information Hub (3.3)

Distribute weed guides to all local nurseries, plant centres and community facilities (3.4)

Engage with other Pest Free groups to compare notes and share learnings (including effective methods of engaging with Agencies) (3.5)

RESOURCES

Forest & Bird Weed Control Guide; Auckland Regional Pest Management Plan

WHO ?

INTERNAL

Pourewa Valley Integrated Plan Community-led Advocacy Group (PVAG)

Pourewa Valley Integrated Plan Community-led Advocacy Group (PVAG)

Pourewa Valley Integrated Plan Community-led Advocacy Group (PVAG)

Pourewa Valley Integrated Plan Community-led Advocacy Group (PVAG)

Pourewa Valley Integrated Plan Community-led Advocacy Group (PVAG)

EXTERNAL

AC Biodiversity; AC Biosecurity; AC Healthy Waters

Restore Hibiscus & Bays; Pest Free Kaipatiki.

WHEN?

YEAR 1

YEAR 1

YEAR 1

YEAR 1

ONGOING

WHAT ?

ACTIONS

Advocate to groups including Auckland Council Compliance and Healthy Waters to improve stream, estuary and harbor water quality (4.1)

Explore the role of storm water catchment plans in improving water quality, managing overland flows and supporting biodiversity, and pest management (4.2)

Promote and support estuarine and stream-side planting and identify new opportunities to improve water quality and soil stability including use of water sensitive design (WSD) concepts and features (4.3)

RESOURCES

Healthy Water Projects: Purewa Creek Catchment combined network separation project; Water Quality Improvement Project; Pipe Renewal/Upgrade of Harvey Place

DOC Community Fund ; AC Local Parks “adopt a park” programme; AC NETR fund (Supply of tools and resources for conservation projects); Ōrākei Local Board Grant; Ōrākei Local Board Quick Response & Tree Protection Grant; AC Community Coordination and Facilitation (CCF) grant

WHO ?

INTERNAL

Pourewa Valley Integrated Plan Community-led Advocacy Group (PVAG)

Pourewa Valley Integrated Plan Community-led Advocacy Group (PVAG)

Pourewa Valley Integrated Plan Community-led Advocacy Group (PVAG)

EXTERNAL

AC Biodiversity; AC Biosecurity; AC Stormwater; AC Healthy Waters; Ministry of Housing and Urban Development/Urban Development Authority; AC Sustainable Schools - Environmental Services Unit; AC Local Parks (Community Ranger); DOC; New Zealand Transport Agency; Auckland Transport; Ōrākei Local Board; Watercare Services Ltd, Auckland Motorway Alliance; KiwiRail; Ministry of Education; Ministry of Housing and Urban Development/Urban Development Authority

AC Parks & Places Specialist; AC Biodiversity; AC Biosecurity; AC Stormwater; AC Healthy Waters

AC Biodiversity; AC Biosecurity; AC Stormwater; AC Healthy Waters; Ministry of Housing and Urban Development/Urban Development Authority; AC Sustainable Schools - Environmental Services Unit; AC Local Parks (Community Ranger); DOC; New Zealand Transport Agency; Auckland Transport; Ōrākei Local Board; Watercare Services Ltd, Auckland Motorway Alliance; KiwiRail; Ministry of Education

WHEN?

ONGOING

ONGOING

ONGOING

4. WATER QUALITY

Monitor, advocate for and improve water quality in the Pourewa Valley (stormwater, drains, streams, intertidal, estuarine, sea).



WHAT ?

ACTIONS

Assemble and maintain a database and map of existing and potential conservation/restoration land (5.1)

Compile an annual snap shot of volunteer group and community group activity across the Pourewa Valley (5.2)

Develop and promote restoration activities including planting events (with seeds and plants eco-sourced from within the Tamaki Ecological District), workshops on applying for grants and funding, and courses on seed collection and propagation (5.3)

RESOURCES

DOC Community Fund ; AC Local Parks "adopt a park" programme; AC NETR fund (Supply of tools and resources for conservation projects); Ōrākei Local Board Grant; Ōrākei Local Board Quick Response & Tree Protection Grant; AC Community Coordination and Facilitation (CCF) grant

WHO ?

INTERNAL

Pourewa Valley Integrated Plan Community-led Advocacy Group (PVAG)

Pourewa Valley Integrated Plan Community-led Advocacy Group (PVAG)

Pourewa Valley Integrated Plan Community-led Advocacy Group (PVAG)

EXTERNAL

AC Biodiversity; AC Biosecurity; AC Stormwater; AC Healthy Waters; Ministry of Housing and Urban Development/Urban Development Authority; AC Sustainable Schools - Environmental Services Unit; AC Local Parks (Community Ranger); DOC; New Zealand Transport Agency; Auckland Transport; Ōrākei Local Board; Watercare Services Ltd, Auckland Motorway Alliance; KiwiRail; Ministry of Education

AC Biodiversity; AC Biosecurity; AC Stormwater; AC Healthy Waters; Ministry of Housing and Urban Development/Urban Development Authority; AC Sustainable Schools - Environmental Services Unit; AC Local Parks (Community Ranger); DOC; New Zealand Transport Agency; Auckland Transport; Ōrākei Local Board; Watercare Services Ltd, Auckland Motorway Alliance; KiwiRail; Ministry of Education

AC Sustainable Schools - Environmental Services Units; AC Local Parks (Community Ranger); DOC

WHEN?

YEAR 1

YEAR 1

ONGOING

5. HABITATS

Enhance habitats to improve the population numbers and diversity of birds, bugs and fish.



WHAT ?

WHO ?

WHEN?

ACTIONS

RESOURCES

INTERNAL

EXTERNAL

YEAR 1

YEAR 1

YEAR 1

ONGOING

ONGOING

Support pest control activities in priority areas outlined in figures “plant pest control - priority sites” and “animal pest control - priority sites” of the Draft Pourewa Integrated Plan (6.1)

OC Community Fund; AC NETR fund (Supply of tools and resources for conservation projects); Ōrākei Local Board Grant; Ōrākei Local Board Quick Response & Tree Protection Grant; AC Community Coordination and Facilitation (CCF) grant

Pourewa Valley Integrated Plan Community-led Advocacy Group (PVAG)

AC Biodiversity; AC Biosecurity; AC Stormwater; AC Healthy Waters; Ministry of Housing and Urban Development/Urban Development Authority; AC Sustainable Schools - Environmental Services Unit; AC Local Parks (Community Ranger); DOC; New Zealand Transport Agency; Auckland Transport; Ōrākei Local Board; Watercare Services Ltd, Auckland Motorway Alliance; KiwiRail; Ministry of Education

Coordinate and support volunteer groups in the implementation of current restoration plans in the Pourewa Valley (e.g. Restoration Plan for Selwyn Bush) (6.2)

DOC Community Fund ; AC NETR fund (Supply of tools and resources for conservation projects); Ōrākei Local Board Grant; Ōrākei Local Board Quick Response & Tree Protection Grant; AC Community Coordination and Facilitation (CCF) grant

Pourewa Valley Integrated Plan Community-led Advocacy Group (PVAG)

AC Biodiversity; AC Biosecurity; AC Stormwater; AC Healthy Waters; Ministry of Housing and Urban Development/Urban Development Authority; AC Sustainable Schools - Environmental Services Unit; AC Local Parks (Community Ranger); DOC; New Zealand Transport Agency; Auckland Transport; Ōrākei Local Board; Watercare Services Ltd, Auckland Motorway Alliance; KiwiRail; Ministry of Education

Define the role, seek funding and appoint a Pourewa Restoration Group Field Officer to assist with restoration planning and support (6.3)

AC Community Coordination and Facilitation (CCF) grant

Pourewa Valley Integrated Plan Community-led Advocacy Group (PVAG)

Ōrākei Local Board Advisors

Develop and promote pest control activities including weeding events, workshops on applying for grants and funding, and courses on trapping and monitoring (e.g. tracker tunnels) (6.4)

DOC Community Fund ; AC NETR fund (Supply of tools and resources for conservation projects); Ōrākei Local Board Grant; Ōrākei Local Board Quick Response & Tree Protection Grant; AC Community Coordination and Facilitation (CCF) grant

Pourewa Valley Integrated Plan Community-led Advocacy Group (PVAG)

AC Sustainable Schools - Environmental Services Unit; AC Local Parks (Community Ranger); DOC

Develop a synchronised monitored programme of pre-feeding, trapping and baiting between volunteer groups and private landowners (6.5)

Pourewa Valley Integrated Plan Community-led Advocacy Group (PVAG)

Ngāti Whātua Ōrākei; New Zealand Transport Agency; Auckland Transport; Watercare Services Ltd, Auckland Motorway Alliance; KiwiRail; Ministry of Education, Auckland Council

6. PESTS

Control pest plants and eliminate pest animals within the catchment.



WHAT ?

ACTIONS

Establish and implement an integrated monitoring and reporting framework, that aligns with monitoring in the Ōrākei Basin and Hobson Bay (e.g. Hapua Thrive) (7.1)

Support schools and citizen science groups monitoring water quality, habitat and species diversity (7.2)

RESOURCES

Ōrākei Basin Bathymetry Survey 2019; Ōrākei Basin State of the Basin Monitoring Report 2018

WHO ?

INTERNAL

Pourewa Valley Integrated Plan Community-led Advocacy Group (PVAG)

Pourewa Valley Integrated Plan Community-led Advocacy Group (PVAG)

EXTERNAL

AC Biodiversity; AC Biosecurity; AC Stormwater; AC Healthy Waters; Ministry of Housing and Urban Development/Urban Development Authority; AC Sustainable Schools - Environmental Services Unit; AC Local Parks (Community Ranger); DOC; New Zealand Transport Agency; Auckland Transport; Ōrākei Local Board; Watercare Services Ltd, Auckland Motorway Alliance; KiwiRail; Ministry of Education, Hapua Thrive

AC Sustainable Schools - Environmental Services Unit; AC Local Parks (Community Ranger); DOC

WHEN?

ONGOING

ONGOING

7. MONITOR

Baseline water quality, habitat quality and species diversity indicators against which improvements can be measured aligning with the monitoring taking place in Ōrākei Basin.



OPPORTUNITIES AND ACTIVATION AREAS

Figure 11 introduces design illustrations showing some opportunities and potential activation areas for the Pourewa Valley. Some of the features indicated already exist or are currently being planned.

These illustrations highlight aspects of the valley that are special, unique or require some type of action in order to transform the valley into a connected up, restored parkland network with a variety of experiences. Future work or 'projects' could be built around these ideas.

These opportunities and activations could expand on existing areas of interest within the valley and may include other planned initiatives.

An example of these on the Pourewa Valley Recreation Reserve include Ngāti Whātua Ōrākei's plans for tākaro - summer camping, waka landings, mārakai – gardens, ōkahu rākau – nursery, and He Tomo-Kanga – hub.

Other examples in the valley include Selwyn Bush's 'Refugee Garden' and Selwyn Park's 'Lady Elizabeth Jane Scott Memorial Botanic Garden' (Lady Elizabeth was formerly a teacher at Selwyn College).

One other interesting historic feature that provides opportunity for park activation is the large Oak tree close to the railway line on the southern side of the Pourewa Creek. It was planted by Bishop Selwyn at the site of his first camp who was one of the very first European settlers in the valley.

NEXT STEPS

March 2020 – feedback and amendments on Draft Plan from Core Community-led Advocacy Group.

April 2020 – workshop Draft Plan with Ōrākei Local Board, Auckland Council Parks and Places and Core Community-led Advocacy Group. Amendments and adoption of Final Plan by the Ōrākei Local Board.

April – July 2020 – public consultation of Final Plan in conjunction with the public consultation for the Ōrākei Local Board (3 Year) Plan 2020.

July 2020 – seek funding from the Ōrākei Local Board 2020 grants programme for "Year 1" Actions outlined in the actions tables above.

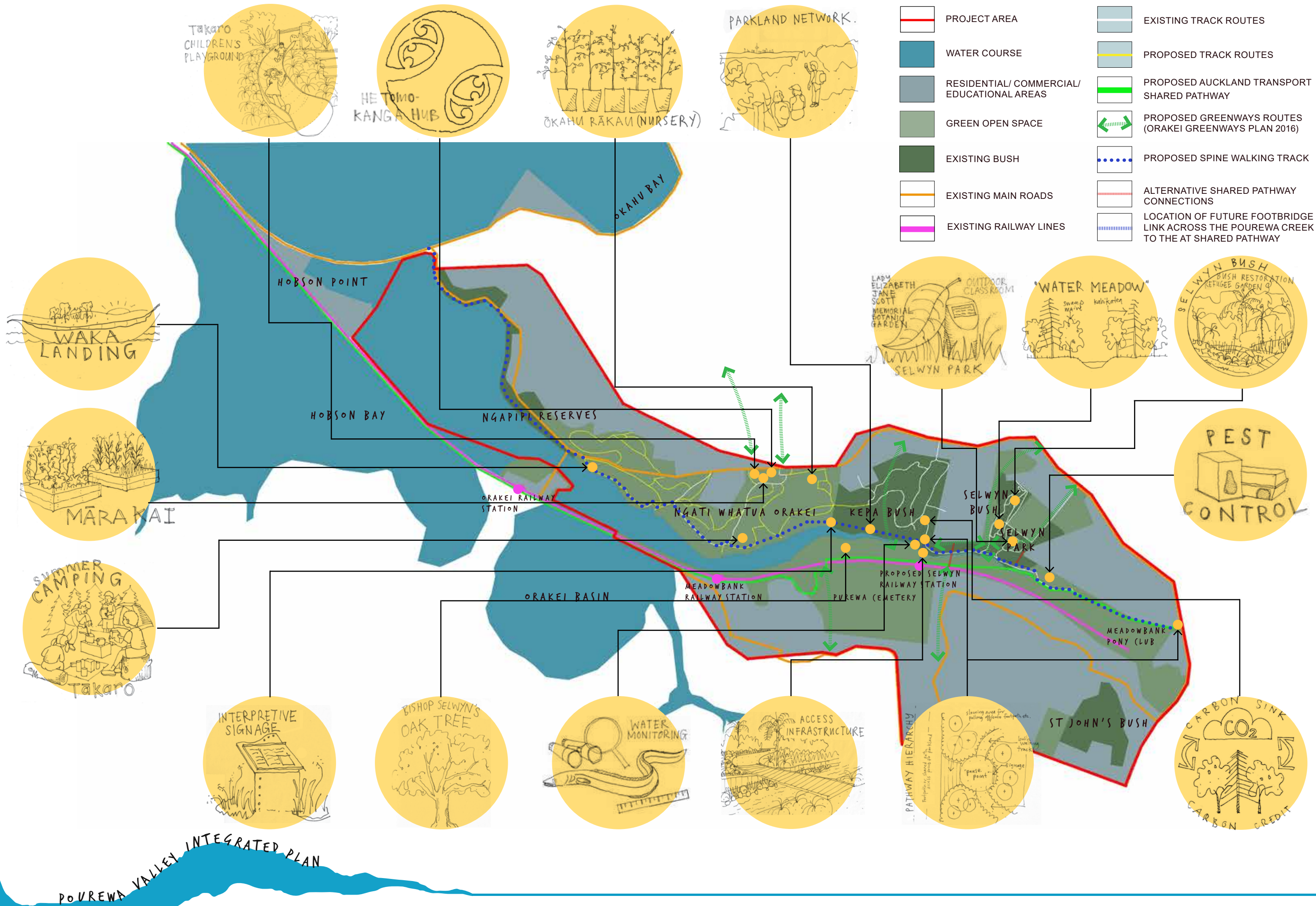


FIGURE II: FUTURE ACTIVATION AREAS

REFERENCE DOCUMENTS

- Ōrākei Visual Framework, 2018. Xanthe White Design
- Kēpa Bush Reserve Integrated Plan. Auckland Council
- Ecological Input for the Kēpa Bush Integrated Plan, 2018. Wildland Consultants
- Ngāti Whātua Ōrākei Te Pou o Kāhu Pōkere. Iwi Management Plan for Ngāti Whātua Ōrākei, 2018. Ngāti Whātua Ōrākei
- Ōrākei Local Board Natural Environment Enhancement Plan, 2019. 4Sight Consulting for Auckland Council ES (Biodiversity)
- Ōrākei Basin Management Plan, 2010. Auckland City Council.
- Ōrākei Basin State of the Basin Monitoring Report, 2018. PSR Auckland Council
- Ōrākei Basin Bathymetry Survey. 2019. Discovery Marine Ltd for Auckland Council
- Report on Trapping Activities on NZTA Land in Pourewa Valley between July and November 2018' by John La Roche.
- Restoration Plan for Selwyn Bush, 2014. Melissa Marler for Pourewa Restoration Group
- Pourewa Way Finding Study, 2018. Recreation Solutions Limited



RESOURCES

- DOC Community Fund: www.doc.govt.nz/get-involved/funding/doc-community-fund/
- AC Local Parks Adopt a Reserve: mylocalpark@aucklandcouncil.govt.nz
- AC NETR Fund: pestfree@aucklandcouncil.govt.nz
- Countdown Growing for Good Grant: www.countdown.co.nz/community-environment/countdown-growing-for-good-grants
- Orakei Local Board Grant: <https://www.aucklandcouncil.govt.nz/grants-community-support-housing/grants/local-board-grants/orakei-local-board-grants/Pages/default.aspx>
- Orakei Local Board Quick Response & Tree Protection Grant: <https://www.aucklandcouncil.govt.nz/grants-community-support-housing/grants/local-board-grants/orakei-local-board-grants/Pages/default.aspx>
- AC Community Coordination and Facilitation (CCF) Grant: <https://www.aucklandcouncil.govt.nz/grants-community-support-housing/grants/regional-grants/Pages/grant-details.aspx?itemID=77>

LIST OF FIGURES

- Figure 1: Project Area
- Figure 2: Existing Track Network
- Figure 3: Pathway Network Options
- Figure 4: Plant Pest Control - Priority Sites
- Figure 5: Animal Pest Control - Priority Sites
- Figure 6: What You Told Us
- Figure 7: Overview of the Pourewa Valley Integrated Plan Process
- Figure 8: Vision of the Pourewa Valley Integrated Plan
- Figure 9: Key Aims of the Pourewa Valley Integrated Plan
- Figure 10: Actions Arising From the Plan
- Figure 11: Future Activation Areas

POUREWA VALLEY INTEGRATED PLAN